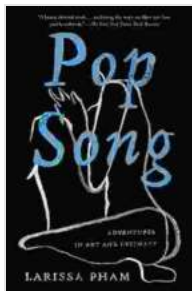


Pop Song Adventures in Art: Exploring the Interplay of Music and Visual Intimacy

The world of pop music and art have long been intertwined, with artists from both domains drawing inspiration and collaborating to create captivating works. In recent years, there has been a surge in pop songs that explicitly delve into the realm of art, exploring themes of aesthetics, intimacy, and the power of visual representation.



Pop Song: Adventures in Art & Intimacy by Larissa Pham

★★★★☆ 4.5 out of 5

Language	: English
File size	: 1279 KB
Text-to-Speech	: Enabled
Screen Reader	: Supported
Enhanced typesetting	: Enabled
Word Wise	: Enabled
Print length	: 288 pages



This article delves into the fascinating adventures of pop songs that venture into the territory of art, examining their lyrics, imagery, and the artistic references they evoke. We will journey through a landscape of songs that pay homage to iconic paintings, celebrate the allure of the female form in art, and explore the sensual and emotional connections sparked by artistic encounters.

Homages to Masterpieces: When Pop Songs Paint with Words

Some pop songs serve as lyrical tributes to beloved works of art, capturing the essence and impact of these timeless masterpieces. Take for instance, Ed Sheeran's "Shape of You," which draws inspiration from Henri Matisse's "Le Bateau."



Sheeran's lyrics mirror the painting's simplified forms and vibrant colors, evoking a sense of carefree summer romance:

“

***“I'm in love with your body, girl, I can't control myself.”
“You're so beautiful, like a Matisse painting.””***

Similarly, Taylor Swift's "Blank Space" references Vincent van Gogh's "The Starry Night" through its swirling, chaotic imagery:

“

***“All the lonely Starbucks lovers
They'll tell you I'm insane.”
“Cause you know I love the players
And you love the game.”
“Out of the black, into the blue
Into the white into the blue.”
”***



Vincent van Gogh, *The Starry Night* (1889)

Art as a Seductive Force: Exploring Female Intimacy

In the realm of pop music, art often becomes a seductive force, as artists use visual references to explore the allure and intimacy of the female form. Beyoncé's "Partition" is a particularly evocative example.

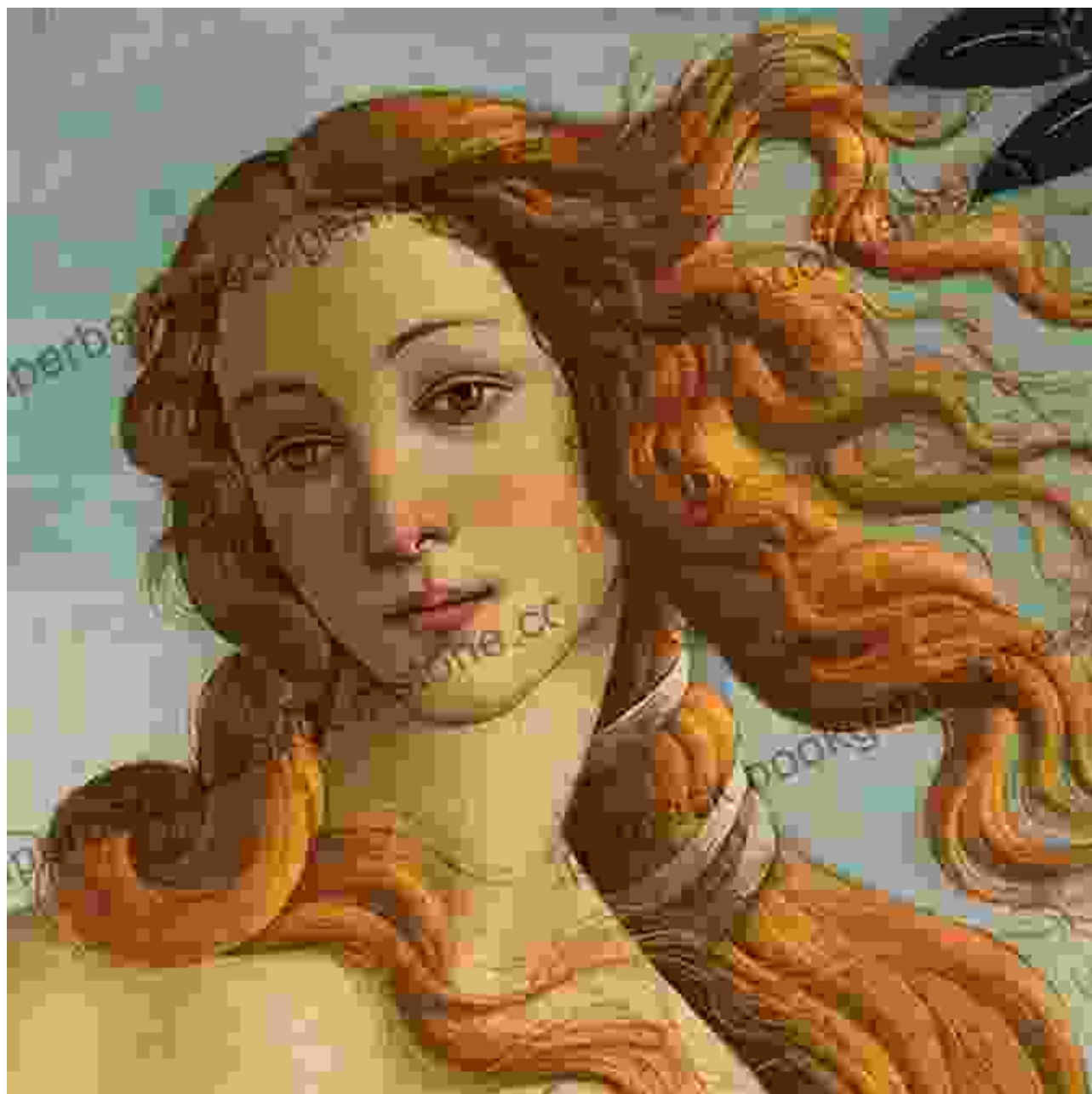


The song's lyrics paint a sensual picture of a woman, her body adorned with jewels and her movements reminiscent of a work of art:



***“I wanna ride it like a Clydesdale
I want you to drink my lemonade.”
“Can I get a side of your attention?
Have you ever tasted love like this?””***

The music video, directed by Melina Matsoukas, further enhances the visual interplay, featuring a series of artistic references to paintings and sculptures. In one scene, Beyoncé poses as Botticelli's "Venus," her body draped in a flowing gown that evokes the elegance and eroticism of the classical work.



Sandro Botticelli, *Venus* (c. 1485)

Sensuality and Emotional Connection: Art as a Catalyst for Intimacy

Beyond its seductive allure, art can also serve as a catalyst for emotional connection and intimacy. In her song "Venus Fly," Grimes explores the interplay between artistic creation and the intimacy of a lover's embrace.



The song's lyrics evoke a sense of artistic collaboration and the desire to create something beautiful together:

“

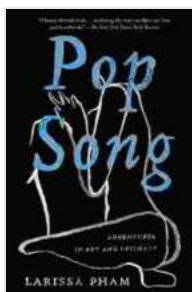
***“I'm not the one who shapes the flow
But I know right from wrong.” "I'm a Venus fly trap***

"I'm just a venus fly trap."

”

The music video, directed by Grimes herself, weaves together dreamlike visuals and references to classical art, creating an immersive and emotionally charged atmosphere. In one scene, Grimes is depicted as a painting come to life, her body adorned with paint and surrounded by brushstrokes.

The adventures of pop songs in art intimacy are a testament to the enduring power and versatility of both music and art. These works transcend the boundaries of their respective domains, merging the sensual and the emotional, the aesthetic and the intimate. Through their lyrical homages, artistic references, and evocative imagery, these songs invite us to explore the myriad connections between music and art, and to appreciate the transformative power of visual beauty and emotional connection.

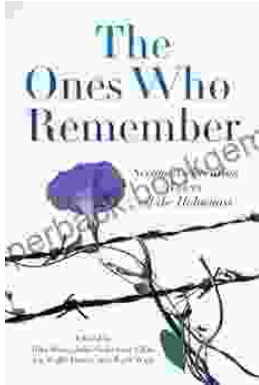


Pop Song: Adventures in Art & Intimacy by Larissa Pham

★★★★☆ 4.5 out of 5

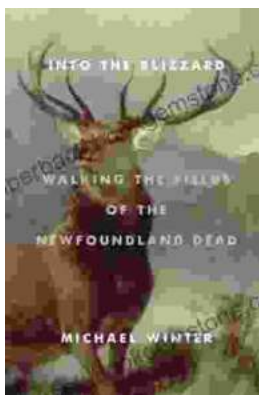
Language : English
File size : 1279 KB
Text-to-Speech : Enabled
Screen Reader : Supported
Enhanced typesetting : Enabled
Word Wise : Enabled
Print length : 288 pages





The Second Generation: Voices of the Holocaust

The Holocaust was one of the most horrific events in human history. Millions of people were killed, and countless others were left traumatized. The survivors of the Holocaust...



Walking the Fields of the Newfoundland Dead

In the heart of the rolling countryside of northern France, where the Somme River meanders through fields once scarred by war, lies a poignant reminder of the sacrifices made...